

Secondary chondrosarcoma: Malignant transformation of pre-existing hereditary and non-hereditary cartilaginous lesions

Authors:

Susanna C.S. Vlok¹
Georg W.W. Wagener¹
Dan Zaharie²

Affiliations:

¹Division of Radiodiagnosis,
Stellenbosch University and
Tygerberg Hospital,
South Africa

²Department of Anatomical
Pathology, Stellenbosch
University and Tygerberg
Hospital, South Africa

Correspondence to:

Susanna Vlok

Email:

sucarivlok@gmail.com

Postal address:

11 Bergzicht, Wylant Street,
Welgemoed, Bellville 7530,
South Africa

Dates:

Received: 28 July 2014
Accepted: 20 Nov. 2014
Published: 15 Dec. 2014

How to cite this article:

Vlok, S.C.S., Wagener,
G.W.W., Zaharie, D.
Secondary chondrosarcoma:
Malignant transformation
of pre-existing hereditary
and non-hereditary
cartilaginous lesions. *S Afr J
Rad.* 2014;18(2); Art. #703,
5 pages. [http://dx.doi/
org/10.4102/sajr.v18i2.703](http://dx.doi.org/10.4102/sajr.v18i2.703)

Copyright:

© 2014. The Authors.
Licensee: AOSIS
OpenJournals. This work is
licensed under the Creative
Commons Attribution
License.

Read online:



Scan this QR
code with your
smart phone or
mobile device
to read online.

Secondary chondrosarcoma is a malignant hyaline cartilage tumour originating from a cartilaginous precursor, either osteochondroma or enchondroma. We contrast two different cases of biopsy-proven secondary chondrosarcomas resulting from benign, pre-existing cartilaginous lesions – our aim is to contrast and compare these two benign conditions consisting of multiple cartilaginous lesions – one hereditary and the other non-hereditary – and emphasise their potential for malignant transformation.

Introduction

Chondrosarcoma is a malignant cartilaginous tumour of either primary or secondary origin.¹ Primary chondrosarcoma originates in previously normal bone in the absence of a precursive cartilaginous lesion^{1,2,3} and is more common than secondary chondrosarcoma² which results as a complication of a pre-existing cartilaginous lesion.³

Case reports

Case 1

An 18-year-old girl presented with bilateral bony knee deformities and associated pain. A full-length radiograph of the lower extremities demonstrated multiple sessile and pedunculated exostoses bilaterally. Peripheral permeation and heterogenous appearance of the medial distal femoral exostosis was noted (Figure 1).

Magnetic resonance imaging (MRI) showed a large osteochondroma of the medial distal femur covered by an irregular lobular cartilage cap with a maximum diameter of 10 mm as well as underlying T2 hyperintense bone changes (Figure 2), suggestive of malignant transformation. Histological analysis confirmed a low-grade chondrosarcoma (Figure 3 and Figure 4).

Case 2

A 60-year-old woman with known Ollier disease presented with increased swelling and pain of the right middle finger. Conventional radiography of the hands showed multiple enchondromas unilaterally in the right hand (Figure 5).

Cortical destruction of the intermediate phalanx of the right middle finger, with an associated soft-tissue mass containing chondroid calcifications (Figure 6), suggested malignant transformation.

Histology obtained after surgical amputation of the third finger revealed a grade II chondrosarcoma (Figure 7 and Figure 8).

Discussion

Multiple hereditary osteochondromas/exostoses (diaphyseal aclasis)

Osteochondroma, the most common benign cartilaginous tumour, is a cartilage-capped bony exostosis arising from the cortical surface of bone. The cortex is uninterrupted from the underlying bone, and the marrow cavity is continuous with the native bone.^{3,4} A diagnosis of multiple hereditary osteochondroma can be made when at least two osteochondromas are detected radiologically in the juxta-epiphyseal region of long bones. A positive family history is obtained in only 60% of cases.⁴ Multiple hereditary osteochondromas is an uncommon, autosomal dominant condition with a prevalence of 1:50 000 – 1:100 000 people⁴ and a slight male predominance.³

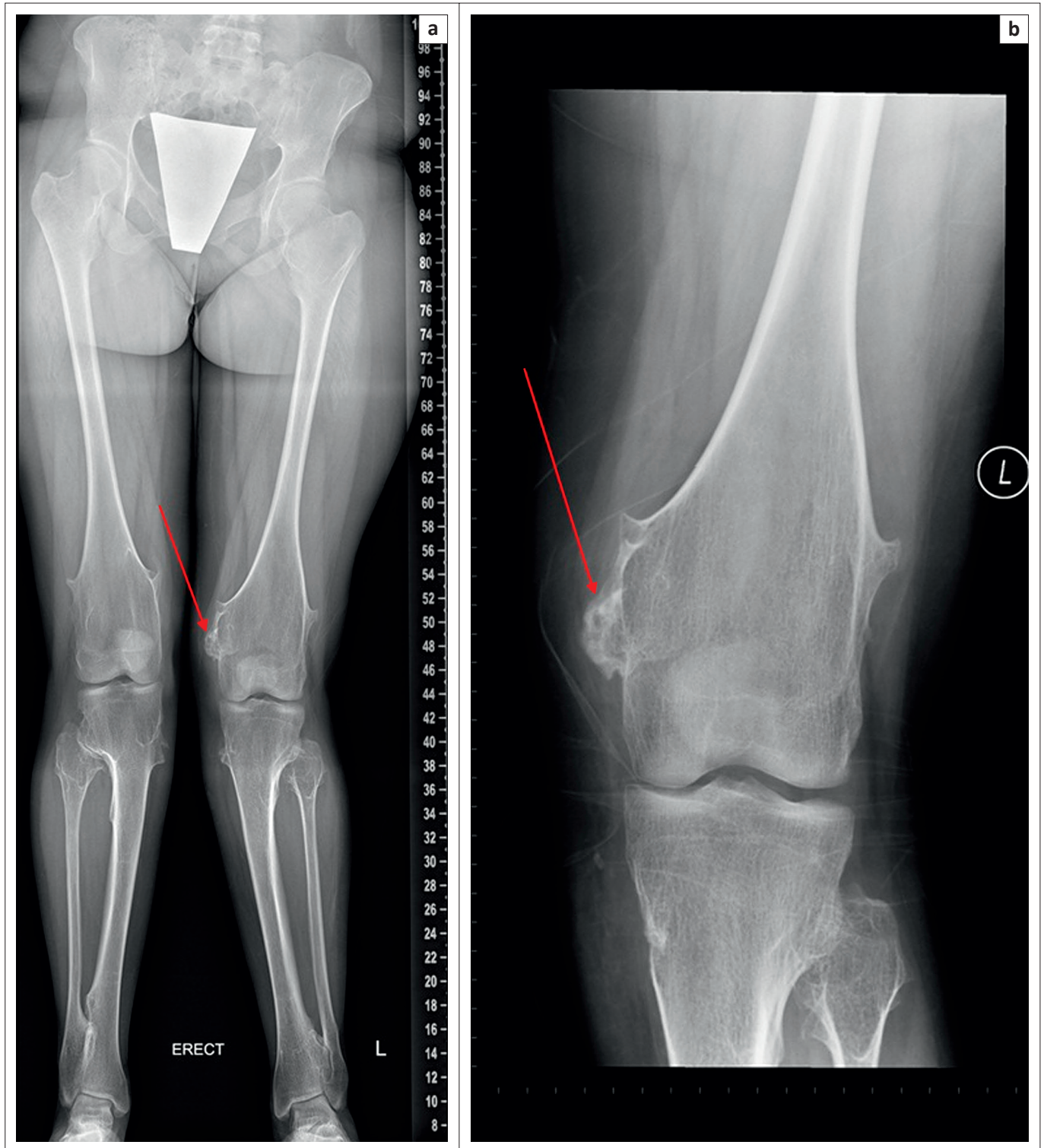


FIGURE 1: Full-length radiograph (a) of the lower extremities reveals multiple hereditary exostoses (diaphysal aclasia) with multiple exostoses of the femorae, tibiae and fibulae bilaterally, with irregular enlargement and calcification of the medial distal femoral exostosis (red arrows; image b is of a smaller field of view).

Osteochondromas develop shortly after birth in the metaphyses of long bones, in close proximity to the epiphyseal plates, and are usually discovered around the median age of three years – almost all by the age of 12 years – when patients present with bony deformities, nerve compression and pain.^{4,5} Malignant transformation of these exostoses is much higher than in sporadic cases (where it is less than 1%), and has been found to be as high as 25% (lower rates of 3% – 5% have also been published).⁶ Lesions typically

form and enlarge during growth until the skeleton is fully matured. Osteochondromas are more commonly broad-based and sessile and less often pedunculated.² Lesions are typically multiple and bilateral, and most commonly affect the knee, humerus, hip and, to a lesser extent, the wrist, ankle and ribs.³

Radiographs of the sessile form show a well-defined bulging cortex associated with normal underlying bone. Lesions tend

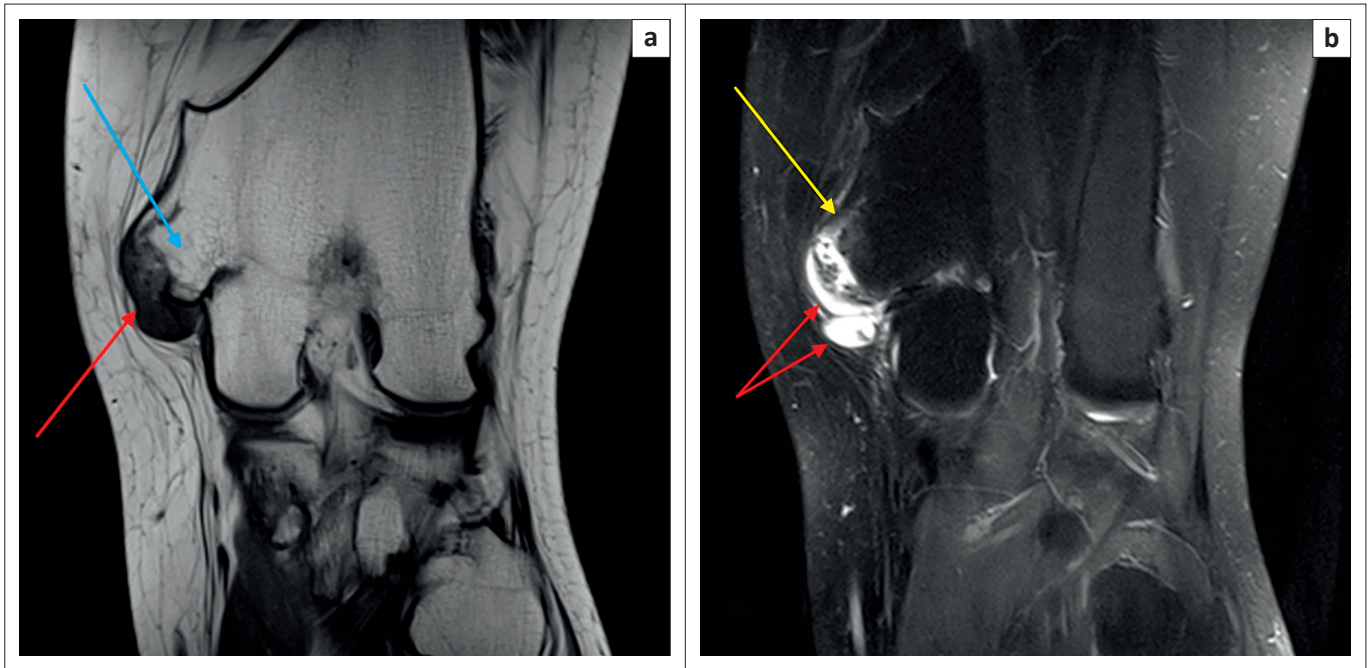


FIGURE 2: Coronal T1 (a) and protein density fat-saturation (b) MR images of the distal right femur demonstrate a large osteochondroma of the medial distal femur (blue arrow) accompanied by a thick overlying T1 iso-intense and PD fat-saturated hyperintense cartilaginous cap (10 mm in diameter) (red arrows) with bony (yellow arrow, image b), but not soft-tissue, infiltration visualised.

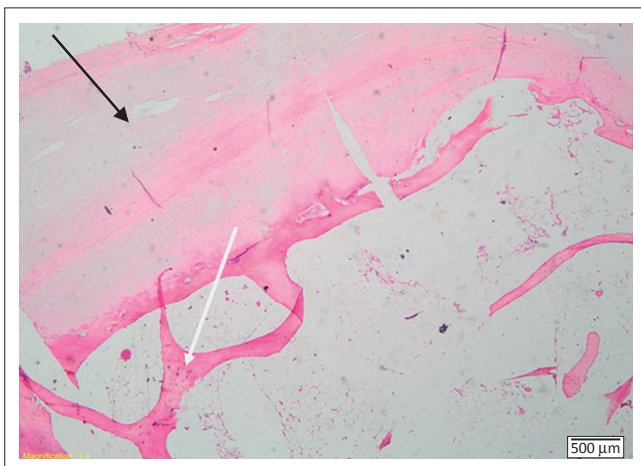


FIGURE 3: Haematoxylin and eosin staining, X 20 magnification. Well-formed hyaline cartilage cap (black arrow) overlying newly formed cancellous bone (white arrow), which contains fatty marrow.

to be symmetric and associated with several bone deformities including bilateral coxa valga. In the pedunculated form, a stalk arises from normal underlying bony cortex and medulla, projecting away from the joint line, growing along the direction of the tendons. MRI of exostoses demonstrates a cortex which is continuous with that of the underlying bone, covered by a T2 bright cartilage cap, with no soft-tissue mass or underlying native bony abnormalities. Ultrasound can be used to evaluate and measure the cartilaginous cap diameter if the lesion is superficial.

Radiographic features suggesting malignant transformation to chondrosarcoma include osseous destruction, scattered calcifications, irregularity and lobulation of the cartilage cap (as demonstrated by the patient described in case 1) and a cartilaginous cap diameter exceeding

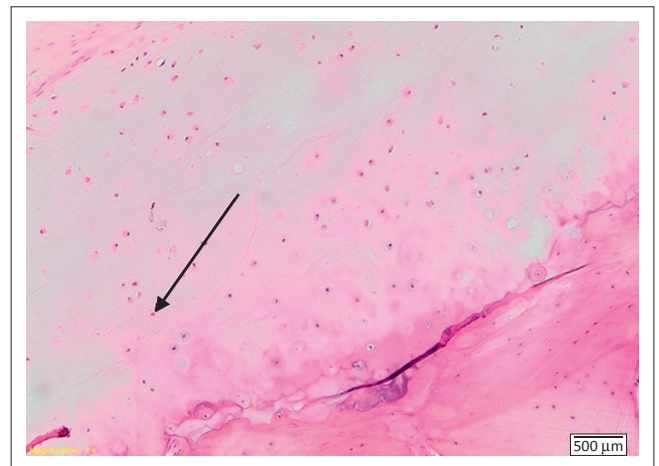


FIGURE 4: Haematoxylin and eosin staining, X 100 magnification. Hypocellular cartilaginous lesion comprising chondrocytes (black arrow) with minimal cytological atypia. The chondrocytes are arranged in vague columns. In deeper layers, the chondrocytes enlarge with more abundant cytoplasm.

10 mm.^{1,2,4} Careful follow-up and monitoring of the size of osteochondromas (in particular, those involving the pelvis or scapula which are known to have an increased tendency to malignant transformation) may aid in early identification of secondary chondrosarcoma.⁵

Multiple enchondromatosis (Ollier disease)

An enchondroma is a benign cartilaginous lesion originating from the medullary cavity. Enchondromas are the result of the continued growth of residual benign cartilaginous rests owing to failure of cartilage ossification.⁷

Multiple enchondromatosis (Ollier disease) is a rare developmental abnormality with an incidence of 1:100 000 people.⁸ The disease usually appears in early childhood,

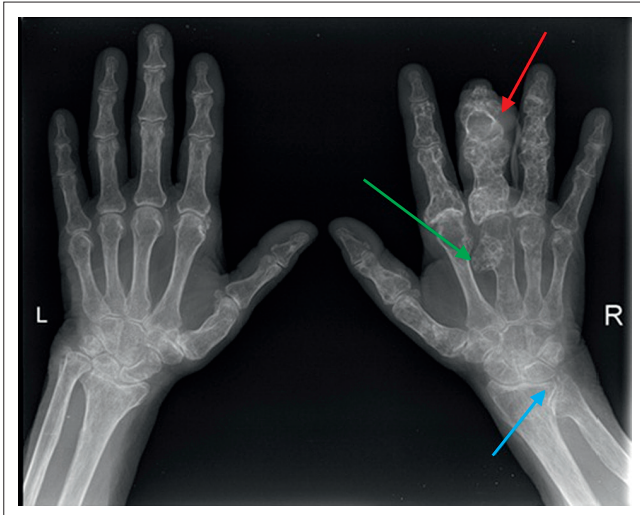


FIGURE 5: Anteroposterior radiograph of both hands demonstrates multiple enchondromas of the metacarpals and phalanges with expansile growth in the third middle phalanx (red arrow) of the right hand, and exophytic growth of the third metacarpal enchondroma (green arrow). Note the unilateral nature of the pathology as well as Madelung's deformity of the right wrist (blue arrow).



FIGURE 6: Lateral radiography displays soft-tissue extension and dorsal cortical destruction of the right intermediate phalanx of the right middle finger (red arrow).

is neither hereditary nor familial, and is considered to be a dysplasia. It is characterised by the presence of enchondromas in the metaphyses and diaphyses of multiple bones, with a tendency to be unilateral and localised to one extremity (as with our patient in case 2).⁷

Patients usually present with unilateral, multiple, painless, palpable bony masses on the fingers or toes, associated with shortening of extremities on the affected side and mildly delayed bone age. Enchondromas that enlarge after puberty

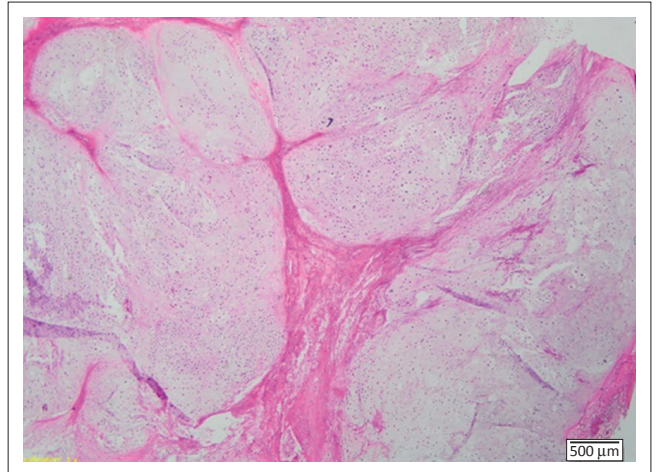


FIGURE 7: Haematoxylin and eosin staining, X 20 magnification. Lobulated hypercellular, cartilaginous neoplasm with a homogeneous basophilic hyaline matrix.

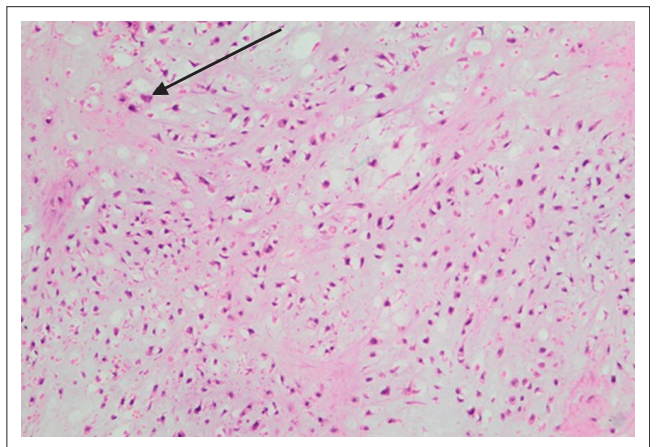


FIGURE 8: Haematoxylin and eosin staining, X 100 magnification. Neoplastic chondrocytes (black arrow) that are pleomorphic, occasionally vacuolated, bipolar and stellate. Some of the cells are binucleated.

are suggestive of malignant transformation, especially if associated with pain and pathological fractures.⁸

Radiographic and computed tomographic (CT) examinations reveal multiple lucent lesions with narrow zones of transition, in the absence of periosteal reactions, cortical breakthrough or soft-tissue involvement. Chondroid calcifications in the form of rings and arcs may be present.^{7,8} Lesions may sometimes be large and even grotesque, especially in the fingers.² On MRI, enchondromas appear as intra-medullary, well-circumscribed lesions with intermediate to low T1 signal, high T2 signal and no surrounding oedema.^{2,7,8,9}

The most severe complication of Ollier disease is malignant transformation to chondrosarcoma,² which is seen in approximately 25% – 30% of cases by the age of 40 years.¹⁰ This happens in less than 1% of sporadic cases.⁹ Radiological features suggestive of malignant transformation include cortical breach, scalloping involving more than two-thirds of the surrounding cortex, an associated soft-tissue mass, and lesions localised to the spine, pelvis, sacrum, ribs and sternum. Distinguishing enchondromas from low-grade

chondrosarcomas may prove a diagnostic dilemma as both these entities may have similar radiological and histological appearances.^{7,8}

Treatment of Ollier disease consists of intervention to treat deformities and surveillance for malignant transformation. Malignancy typically requires surgical intervention.⁷

Teaching point

Exostoses of multiple hereditary osteochondromas and enchondromas owing to Ollier disease undergo malignant transformation to chondrosarcomas in about 25% of cases whereas sporadic exostoses and enchondromas undergo malignant transformation in less than 1% of cases.

Conclusion

Rare, pre-existing cartilaginous lesions such as multiple hereditary osteochondromas and Ollier disease may undergo malignant transformation to chondrosarcoma. Malignant transformation occurs in up to 25% of cases, especially if the lesions are located in the pelvis or scapula.

Ollier disease is a non-hereditary condition consisting of multiple enchondromas. Enlargement of enchondromas post puberty, especially when associated with pain, raises the suspicion of malignant transformation, which happens in 25% – 30% of cases. Lesions localised to the spine, pelvis, sacrum, ribs and sternum carry a high probability for malignant transformation.

Acknowledgements

Competing interests

The authors declare that they have no financial or personal relationship(s) that may have inappropriately influenced them in writing this article.

Authors' contributions

S.C.S.V. (Stellenbosch University), G.W.W. (Stellenbosch University) and Z.D. (Stellenbosch University) contributed equally to the writing of this manuscript.

References

1. Manaster BJ. Chondrosarcoma. STATdx Premier. Amirsys; 2005–2014. [cited 2014 May 20–25]. Available from: <http://my.statdx.com>
2. Manaster BJ, May DA, Disler DG. The requisites, musculoskeletal imaging. 3rd edn. Philadelphia: Mosby; 2007; p. 445, 477–488.
3. Dähnert W. Radiology review manual. 6th edn. Philadelphia: Lippincott Williams & Wilkins; 2007; p. 58–60, 133–135.
4. Bovée JVMG. Multiple osteochondromas. Orphanet J Rare Dis. 2008;3:3. <http://dx.doi.org/10.1186/1750-1172-3-3>
5. Wuyts W, Schmale GA, Chansky HA, Raskind WH. Hereditary multiple osteochondromas. GeneReviews [homepage on the Internet]. [Updated 2000 Aug 3; cited 2013 Nov 21]. Available from: <http://www.ncbi.nlm.nih.gov/books/NBK1235>
6. Lee JK, Yao L, Wirth CR. MR imaging of solitary osteochondromas: Report of eight cases. AJR. 1987;149(3):557–560. <http://dx.doi.org/10.2214/ajr.149.3.557>
7. Murphey MD, Flemming DJ, Boyea SR, Bojescul JA, Sweet DE, Temple HT. Enchondroma vs chondrosarcoma in the appendicular skeleton: Differentiating features. Radiographics. 1998;18(5):1213–1237. <http://dx.doi.org/10.1148/radiographics.18.5.9747616>
8. Thomas AJ. Multiple enchondromatosis. STATdx Premier. Amirsys; 2005–2014. [cited 2014 May 20–25]. Available from: <http://my.statdx.com>
9. Bullough PG. Orthopedic pathology. 4th ed. Philadelphia: Mosby; 2004; p. 405–408, 416.
10. Gabos PG, Bowen JR. Epiphyseal-metaphyseal enchondromatosis. A new clinical entity. J Bone Joint Surg Am. 1998;80(6):782–792.