



UNIVERSITEIT
STELLENBOSCH
UNIVERSITY

**The mid-crustal architecture of a continental arc - a transect through the
South Central Zone of the Pan-African Damara Belt, Namibia**



Christoffel Jasper Anthonissen

Thesis presented in partial fulfilment of the requirements for the degree of

Master of Science

at the University of Stellenbosch
2009

Supervised by Prof. Alex Kisters

Co-supervised by Prof. Gary Stevens

15°45'0"E 15°46'0"E 15°47'0"E 15°48'0"E 15°49'0"E 15°50'0"E 15°51'0"E 15°52'0"E 15°53'0"E

Appendix I: Etusis domain

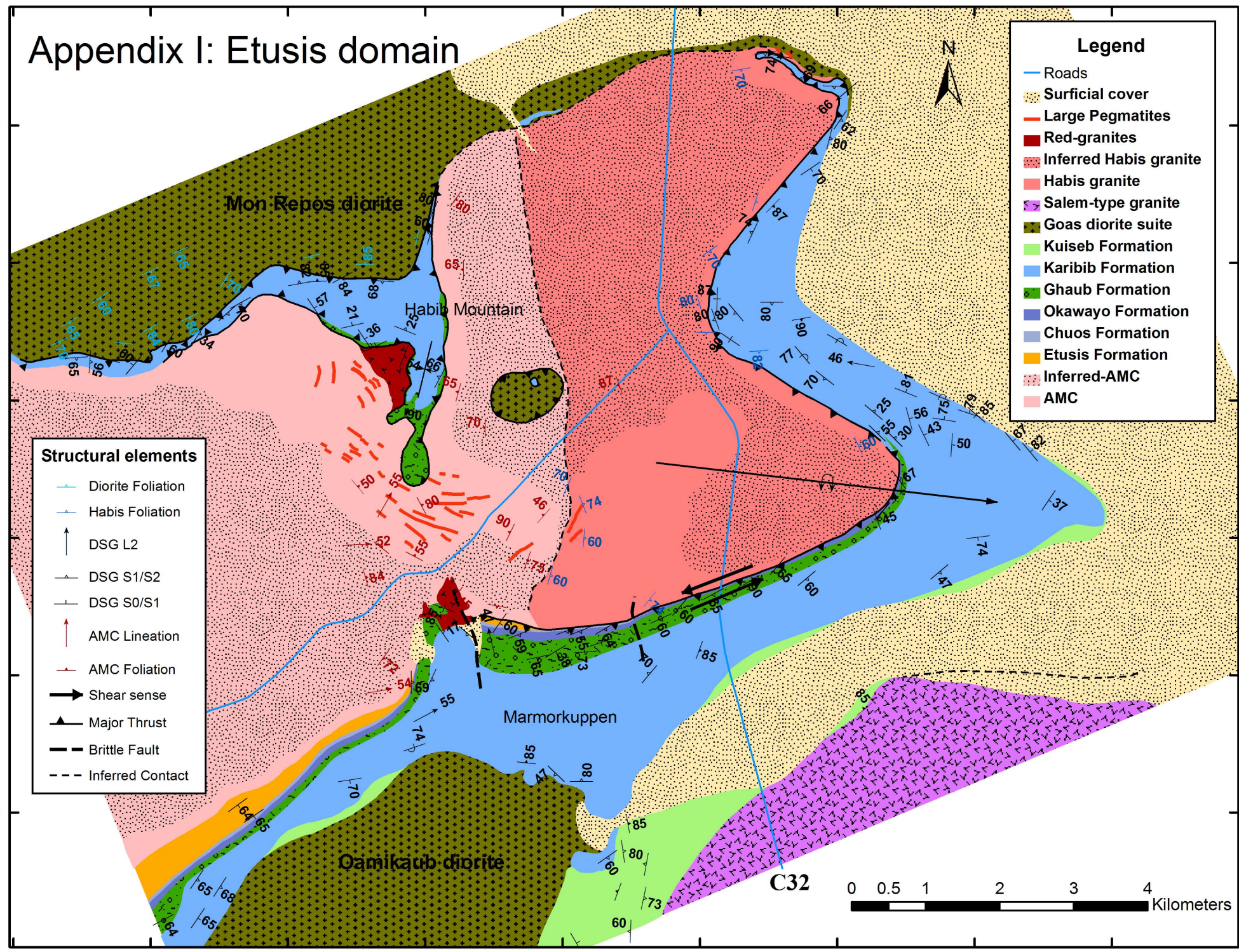
22°2'0"S
22°3'0"S
22°4'0"S
22°5'0"S
22°6'0"S
22°7'0"S

Legend

- Roads
- Surficial cover
- Large Pegmatites
- Red-granites
- Inferred Habis granite
- Habis granite
- Salem-type granite
- Goas diorite suite
- Kuiseb Formation
- Karibib Formation
- Ghaub Formation
- Okwayo Formation
- Chuosi Formation
- Etusis Formation
- Inferred-AMC
- AMC

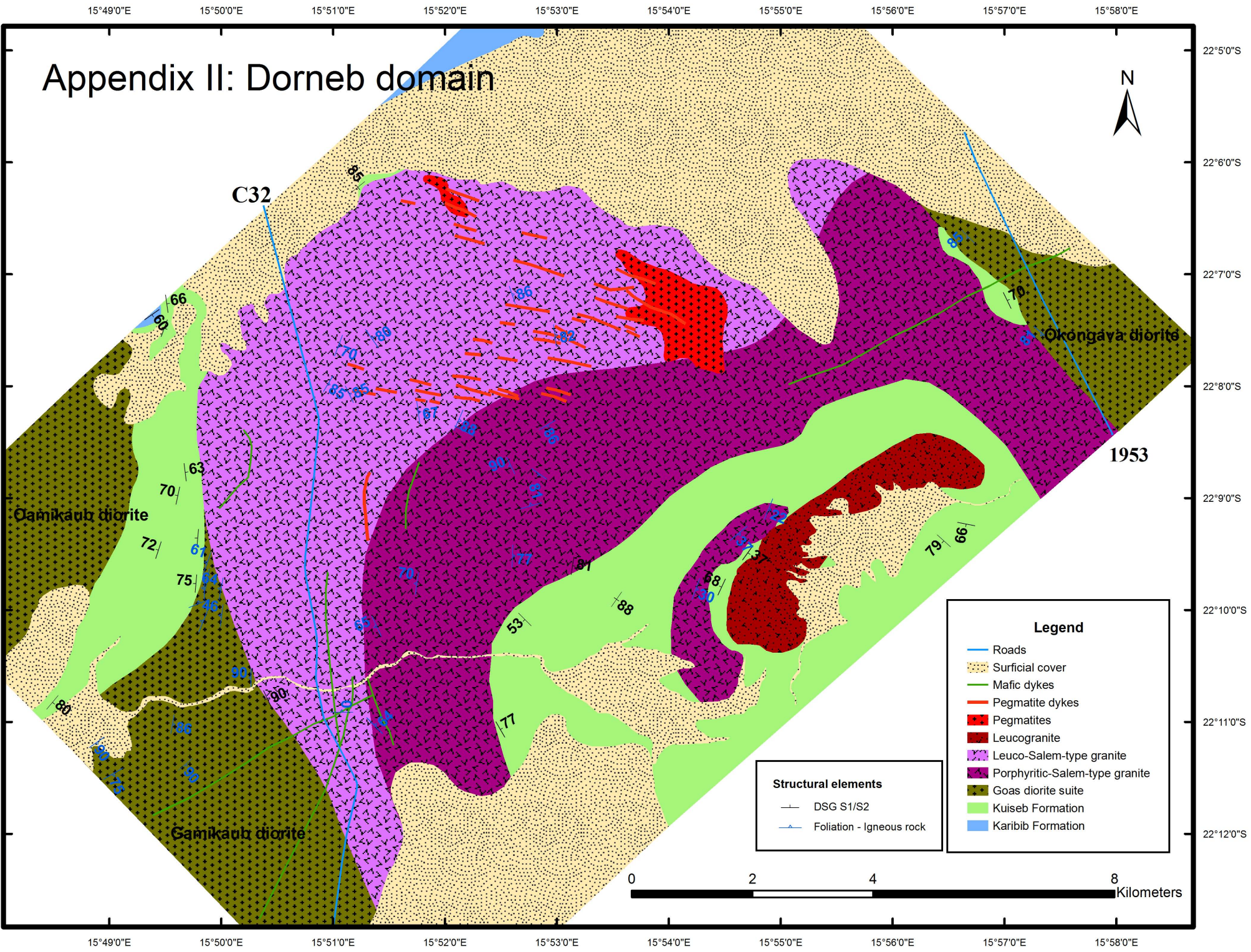
Structural elements

- Diorite Foliation
- Habis Foliation
- DSG L2
- DSG S1/S2
- DSG S0/S1
- AMC Lineation
- AMC Foliation
- Shear sense
- Major Thrust
- Brittle Fault
- Inferred Contact



15°45'0"E 15°46'0"E 15°47'0"E 15°48'0"E 15°49'0"E 15°50'0"E 15°51'0"E 15°52'0"E 15°53'0"E

Appendix II: Dorneb domain



Okongava diorite

1953

Gamikauk diorite

Gamikauk diorite

Legend

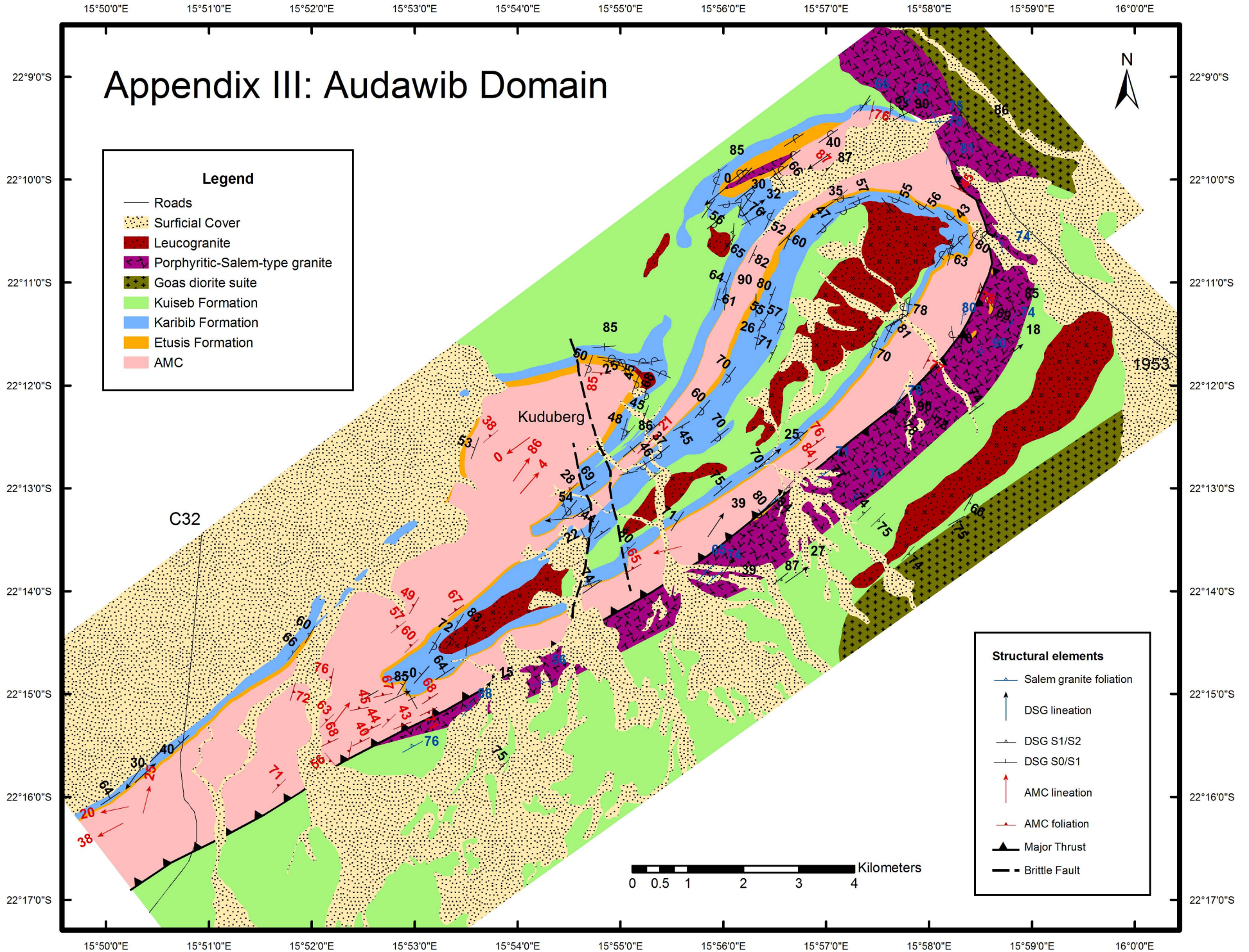
- Roads
- Surficial cover
- Mafic dykes
- Pegmatite dykes
- Pegmatites
- Leucogranite
- Leuco-Salem-type granite
- Porphyritic-Salem-type granite
- Goas diorite suite
- Kuiseb Formation
- Karibib Formation

Structural elements

- DSG S1/S2
- Foliation - Igneous rock



Appendix III: Audawib Domain



Appendix IV: Otjimbingwe domain



Structural elements

- ↑ DSG lineation (L2)
- ↑ Igneous lineation (L2i)
- ↘ Igneous Foliation
- ↘ DSG S1/S2
- ↘ DSG S0/S1
- Faults

Legend

- Surficial cover
- Massive Pegmatite
- Leucogranites
- Otjimbingwe Syenite
- Donkerhuk Granite
- Palmental diorite
- Kuiseb Formation
- Calc-silicate felses and Marble (Lievental Memeber)
- Tinkas Formation
- Marble (Karibib Formation)
- Etusis Formation

